

Endex

Copper bend, 91.5°, copper x copper

N323 Bend



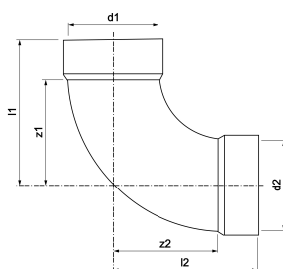
General Information

Key Features

- Copper x Copper

Size	Pattern No.	Pack 1 Qty	Pack 2 Qty	Code	Barcode	Price (£) each ex VAT
35mm N323	1	20		89763	5022050336613	£42.87
42mm N323	1	15		89764	5022050336620	£66.91
54mm N323	1	10		89765	5022050336651	£166.48

N323 Bend



Dimensions

Code Description d1 d2 l1 l2 z1 z2

89763	35mm	N323	35	35	56	56	41	41
89764	42mm	N323	42	42	66	66	49	49
89765	54mm	N323	54	54	78	78	60	60

Pegler Yorkshire reserve the right to change specifications

Guarantee

Pegler 25 Year Guarantee - Terms and Conditions

Products are subject to a 25 year guarantee that is between Pegler and the final purchaser of the product.

The guarantee is subject to proof of purchase being supplied.

This guarantee does not affect any statutory rights the consumer may have in law.

The guarantee covers manufacturing or material defects when installed in accordance with our instructions on specified tube materials and applications, and does not cover parts subject to normal wear and tear.

This product range has been designed for the use of homeowners, domestic and commercial applications and therefore the Guarantee is subject to the product being properly selected for their intended service conditions.

The guarantee is not applicable where the product is fitted contrary to the conditions in the fitting instructions.

This is reinforced where valves are covered by the European Pressure Equipment Directive (PED97/23/EC) where Installation, Operating and Maintenance Instructions are supplied with each product and/or carton.

Provided it is installed correctly and receives adequate preventative maintenance it should give years of trouble-free service.

Abusive behaviour and accidental damage to the product are not covered by this guarantee.

The extent of this liability is limited to the cost of the replacement of the defective item and not to installation or consequential damages.

Care and Maintenance

Care

No regular aesthetic care is required for this product

Maintenance

No regular maintenance is required for this product.

For any further help please contact the Service Support Team on: 0800 1560050.

